



Chil Myeong Bio
|주|칠명바이오

“

**We only produce animal feeds that
could be fed to our own pets.**

”



CONTENTS

Prologue	02
Words of greeting	03
Introduction of the company & Business field	04, 05
History & Product field	06, 07
Insect-use substance technique	08, 09, 10, 11
Dog't be sick	12
· Original	13
· Yummy	14
· Energetic	15



Hello, this is Chil Myeong Bio,
animal feed manufacturing co., ltd.

Chil Myeong Bio was founded in 2018.
Its beginning lies in the process of researching
and making the feed of insects, by a 17-year-old insect maniac.

I will not forget the days when I enjoyed making the food
of insects that I raised myself, and I will strictly adhere
to the principle of making feeds as if it is for the animals I raise.

We study, develop, and produce feed for pets by utilizing
insect food and insects. And through steady efforts,
we will do our best until the day when we can feed every pets.

When I first started my own business when I was a high school student,
the interest and support sent by online and offline communities created the present
of Chil Myeong Bio and is creating the future together. I will always work hard to
give back to the society as much as the interest and support you have sent me so far,
and I will become an entrepreneur who makes a good influence to the society.
Sharing the spirit of a youth entrepreneur, I'll run everywhere.
Chil Myeong bio will always think from the customer's point of view and will always
love people and animals. We will work hard until we become the world's best feed company.

Thank you.

Kong Hee-jun, CEO of Chilmyeong Bio Co., Ltd.



CEO **Kong-Hee-jun**



“We only produce animal feeds that could be fed to our own pets.”

Chil Myeong Bio, a company founded by an insect mania representative, started off with utilizing abandoned agricultural waste resources <Larva Food>. It strictly follows the principle of "producing animal feeds that we could feed our own pets with" and is always making effort to research and produce products from the perspective of the consumers.

01. Chil Myeong Bio studies insects that have future development and develops the future.

02. Chil Myeong Bio plans and develops various kinds of feed.

03. Chil Myeong Bio produces and manages feed developed by itself.



Insect research

We specialize in insects such as beetles, and we are constantly refining our studies so that they can be used and developed in a useful way.

Feed development

We plan and develop reliable feed products in new fields by matching outside experts in each field.



Feed production

We produce feed that we have researched and developed ourselves and make high-quality products through further development and supplementation.

Education

We make a good influence by giving lectures at various Biz schools, middle schools, high schools, and out-of-school youth centers.



2018

- 06 - Selected support projects for innovative start-ups
- 09 - Established Chil Myeong Bio, Inc.
- 12 - Won the Challenge! K-Startup 2018 Small and Medium Venture Business Minister Award

2019

- 01 - Capital increase (100 million won)
- 02 - International Startup Fair 4YFN, BARCELONA SPAIN <LaBa Food> submission
- 05 - Entrance of the 9th Youth Navigation Academy
- 06 - Corporate Location Changed (Road 55, Eunha Yulso, Bongdong-eup, Wanju-gun, Jeollabuk-do)
- 06 - Guarantee 100 million won from Technology Guarantee Fund
- 09 - Patent Registration (10-2019919)
- 10 - Jeonbuk Investment Venture Roadshow Grand Prize
- 10 - Dongguk University D-Premier Startup League Encouragement Prize
- 11 - Industrial-Academic Exchange Cooperation of Konyang University
- 11 - 2019 Korea Talent Award
- 12 - Trademark Applications of <Chil Myeong>, <Larva Food>, and <Dog't be sick>

2020

- 02 - Report on Insect Breeding
- 02 - Development of <Dog't be sick>
- 03 - 10th Entrance to Youth Startup Academy
- 03 - Convention on the Joint Research of Fish Village, Inc., a fishing company corporation
- 03 - Launching the development of fish feed



아프지말개

Dog't be sick

"Customized Pets Nutrients Series"



Larva
Food

"Premium insect feed"

ONLY HIGH PORTEIN, VITAMINS? NO!

Korean edible insect material

Since ancient times, insects in Korea have been widely used as healthy medicinal herbs. According to Donguibogam, a representative medicine book of Joseon, the ancestor of Korea, 95 kinds of insects were used as medicinal herbs.

Edible insects used as representative medicinal herbs of Korea



01 Mealworm



02 Beetle Larva



R&D / Production, Sales of useful insect materials

“

CHILMYEONGBIO.INC has transferred the technology to extract useful functional substances from edible insects studied and developed by the Rural Development Administration, Korea's top agricultural research institute.

Currently, we are working with the university to make the technology 100% self-contained.

CHILMYEONGBIO.INC produces and sells substances that can help with inflammatory diseases, anti-allergies, and rheumatoid arthritis through edible insect extracts.

(The substance is also applied to our nutritional supplement of Dog't be Sick)

”

Key insect material

1. Mealworm



“

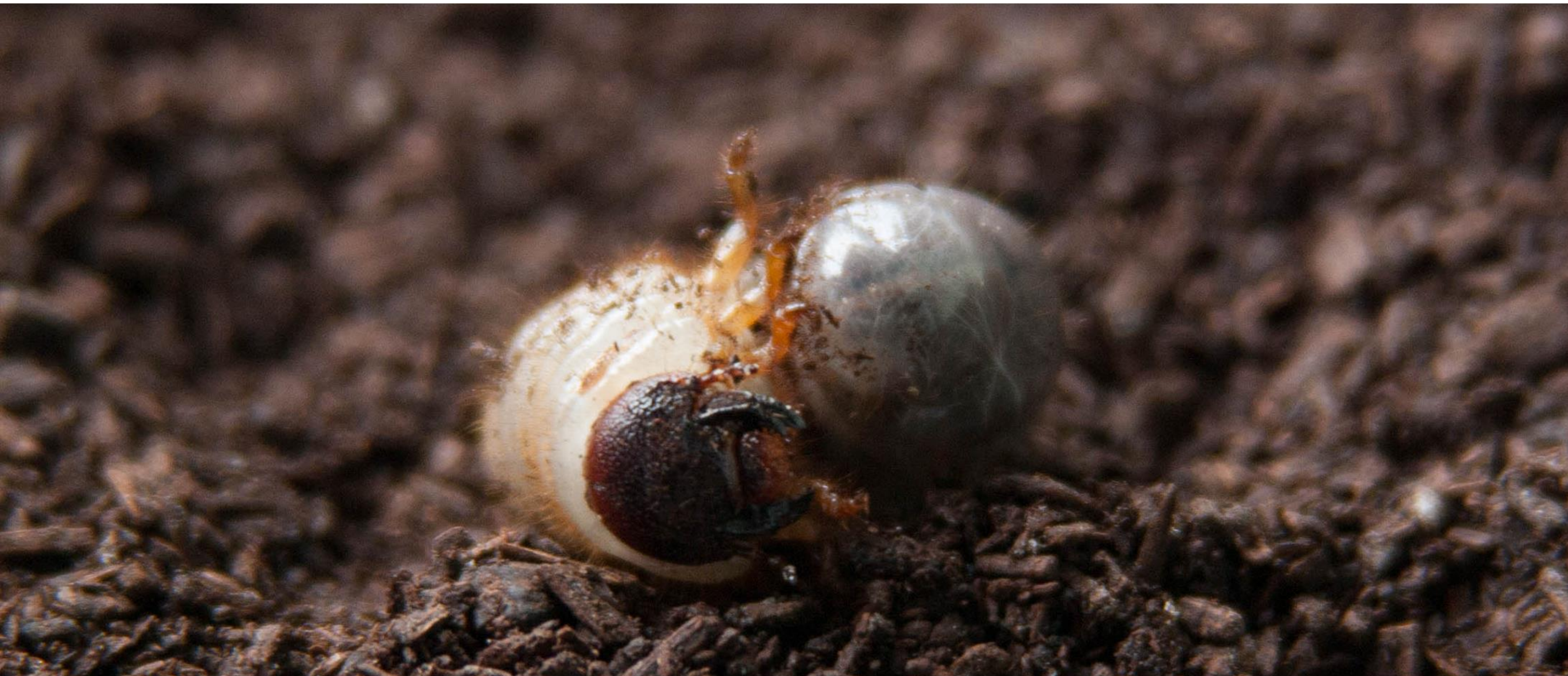
Mealworm is the most representative insect of Korea's insect industry. According to a study by the Rural Development Administration, the insect's extraction and injection of useful substances into inflammatory cells resulted in inhibiting the production of inflammation and helping to treat inflammation.

In addition, the results of the antioxidant detection test on its own have been concluded that it can also help with antioxidant effects.

”

Patent Name: : Composition comprising *Protaetia brevitarsis* for preventing and treating Inflammatory Disorder
Registration number : 1013824000000 / Patent registration of Rural Development Administration, transfer of Chil Myeong Biotechnology (license)

Key insect material 2. Beetle larva



“ Although it is not a dominant insect, studies by the Rural Development Administration show that beetles can help with rheumatoid arthritis.

Since it is an insect that has not been studied much yet, we highly value its potential and are working on the highest importance. (It's the context of thinking it's the most important subject.)

Also, it is clear that the material has high potential because there are not many tribute materials that have been found to have a direct effect on rheumatoid arthritis

”

Patent Name: : Composition for Prevention or TreaADEnt of Rheumatoid Arthritis Comprising extract suspension of Allomyrina dichotoma
Registration number : 1016864200000 / Patent registration of Rural Development Administration, transfer of Chil Myeong Biotechnology (license)

아프지말개



**"Containing patented materials researched and developed by the Rural Development Administration"
One package a day, convenient and customized care**

*For young animals, for the joint health of old animals, and for sick animals!
Three series of customized nutritional supplements developed by an [omniscient dogmatist].*



Original 'Dog't be sick'

Functional raw material used

- Patented mealworm extract
- Formal controlled oil powder (DHA/EPA 18%)
- Bromelain
- Vitamin D3
- Vitamin K1



Why don't you give your sick pets the right food? Special-purpose dietary supplements exclusively for sick pets

It contains functional ingredients that help restore the health of sick children, such as skin improvement, antioxidant action, cognitive function, intestinal health, and bowel movement, and it balances nutrition with diet.

It's good to use at times like this!

One

| If your pet doesn't take medicine, mix it with the feed.

Two

| Give it one package a day when it needs special care, like after surgery.

Three

| If your pet's bluffing, then one package a day.

Dog't be sick- Yummy

Joint nutrient that protects the joints of young dogs

Please take care of your pet's joint health in advance when it is young. Keep your pet's young joints healthy with 'Dog't be sick- Yummy' so that you two can be together for the rest of your life!



Calcium lactic acid | Helps with bone formation

Vitamin D3 | Helps with bone formation

Vitamin K1 | Acts as a blood clotting agent. Some are converted to vitamin K2 to help store calcium and phosphorus in bones and teeth.

Two patented functional extracts

Beetle Larva extract helps with joint health/ Mealworm extract helps with sick animals

Dog't be sick- Energetic

Joint nutrient that protects and restores joints in dogs aged 7 and older.

It is a special nutritional supplement made just for older animals aged 7 or older! It is the most effective joint nutrient for most joint diseases of older dogs.



Glucosamine | Helps with joint and cartilage health

Calcium lactic acid | Helps with bone formation

Vitamin D3 | Helps with bone formation

Vitamin K1 | Acts as a blood clotting agent. Some are converted to vitamin K2 to help store calcium and phosphorus in bones and teeth.

Two patented functional extracts

Beetle Larva extract helps with joint health/ Mealworm extract helps with sick animals



Address : Road 55, Eunha Yulso, Bongdong-eup, Wanju-gun, Jeollabuk-do

Webpage : <http://chilmyeongbio.com/>

TEL : 063-715-3279 | **FAX :** 063-715-4279

E-mail : 7myeong@naver.com